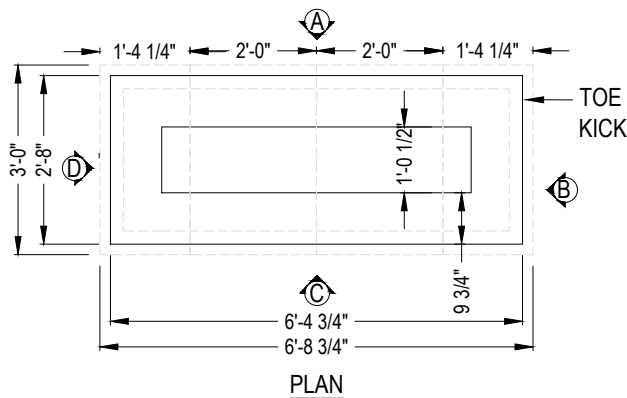
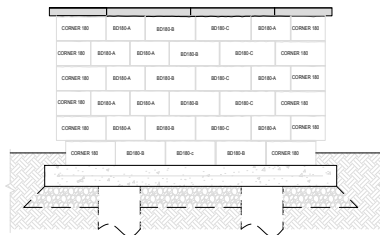


TECHO—BLOC

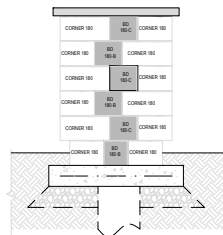
BRANDON 180 mm GRILL ISLAND 6 ft



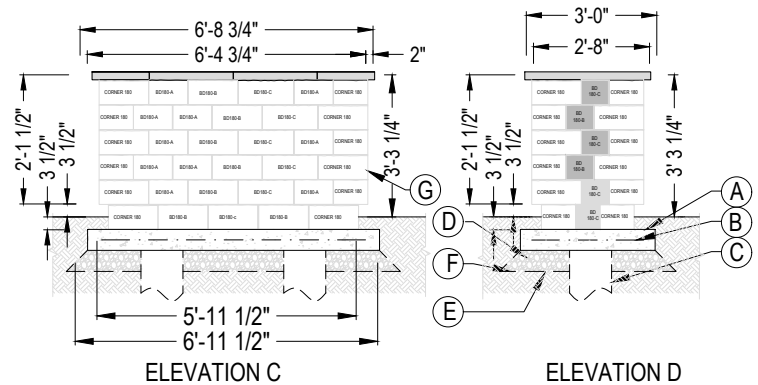
QUANTITY OF MATERIALS REQUIRED		
PRODUCT	BRANDON 180 mm CORNERS	BRANDON 180 mm
QUANTITY NEEDED	1 PALLET + 1 ROW	2 PALLET
UNITS USED	24	A = 20 B = 19 C = 19
UNITS REMAINING	6	A = 0 B = 1 C = 1



ELEVATION A



ELEVATION B



ELEVATION C

ELEVATION D

- CAST IN PLACE CONCRETE SLAB 4350 psi (30 MPa), 6" (150 mm) THICK
- 6X6-W2.9XW2.9 (152X152-MW18.7XW18.7) WELDED WIRE MESH AND/OR REBAR AS PER SITE CONDITIONS
- 12" (300 mm) DIA. CONCRETE PILLAR, EXTENDED TO 6" (150 mm) BELOW FROST LINE AS PER LOCAL CODE
- 3/4" (20 mm) CLEAN STONE 6" (150 mm) THICK MIN. AS PER SITE CONDITIONS
- GEOTEXTILE
- NATURAL SOIL OR COMPACTED BACKFILL
- BRANDON 180 mm PILLAR UNIT

NOTE: Appliances and utilities may vary for each project and are not shown on this drawing. This drawing is shown for inspiration only and surplus or shortage of materials may result. It is the user's responsibility to verify for the quantity of materials required. Secure the blocks using a heat resistant concrete adhesive. The installer must ensure that the installation and use of the grill island comply with local regulations and code requirements. Concrete pillars extending to frost line may be required as per local code. Check your local building code before installing.