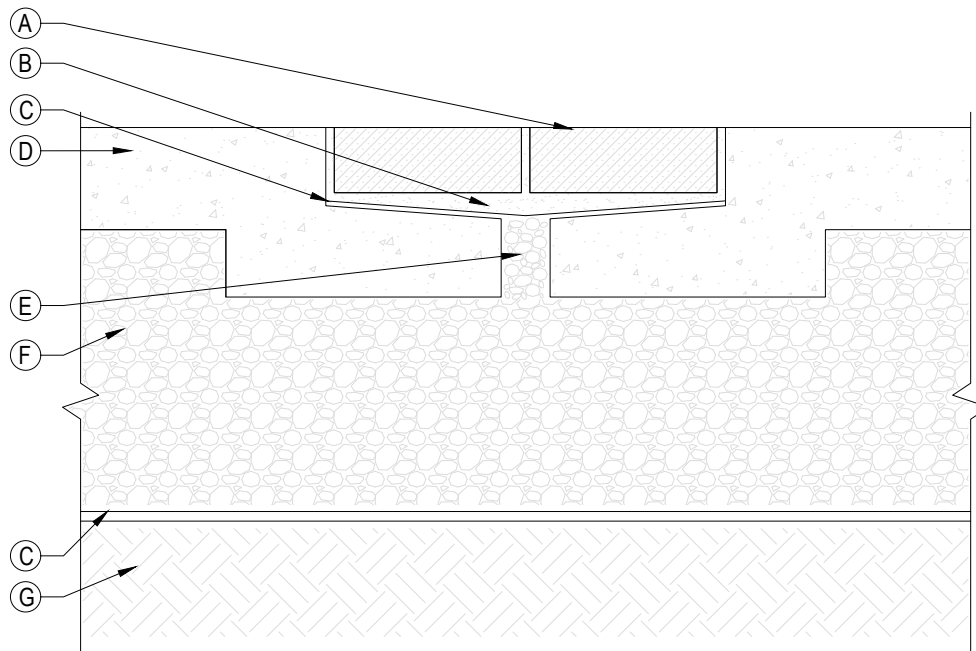

TECHO—BLOC

PAVERS PAVERS INSERTED IN REINFORCED CONCRETE SLAB



SECTION

- A TECHO-BLOC PRECAST CONCRETE PAVER 3 1/8" (80 mm) OR 3 15/16" (100 mm) THICK
CONFORMING TO ASTM C 936
- B SETTING BED (CONCRETE SAND) 1" (25 mm) THICK CONFORMING TO ASTM C 33
- C GEOTEXTILE
- D REINFORCED CONCRETE SLAB
- E DRAINAGE HOLE AT LOWEST ELEVATIONS, 3" (75 mm) DIA. FILL
WITH FREE DRAINING AGGREGATE 1/2" (10 mm)
- F GRANULAR BASE
- G SUBGRADE